

# What's putting patients at risk?

The Washington Health Alliance analyzed 47 commonly overused healthcare services across the All-Payer Claims Database (APCD) for Washington state, using the MedInsight Health Waste Calculator™

Here's what they found:

**846,973**

patients received low-value services each year on average

**51%**

of services found to be wasteful

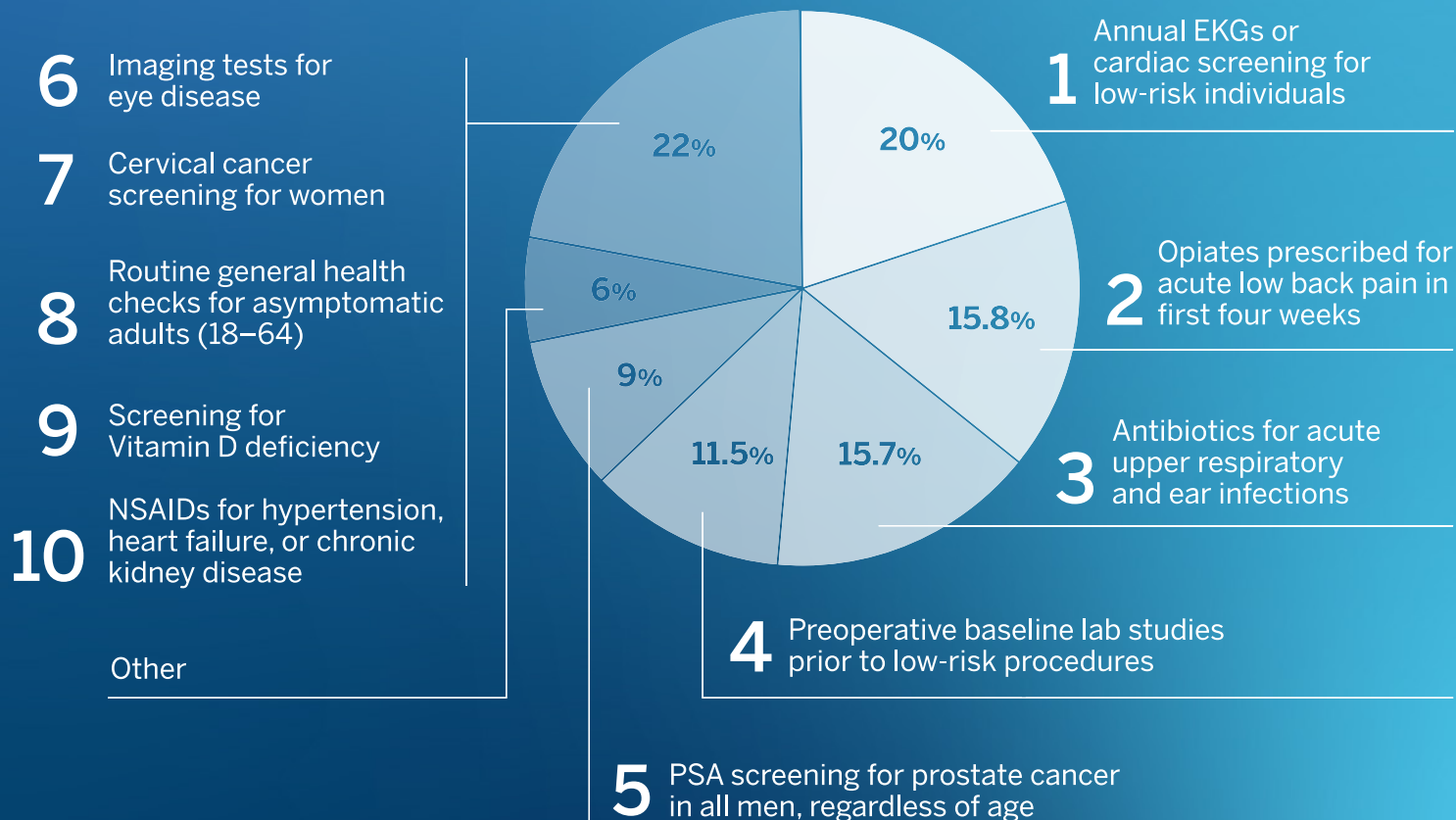
**\$703M**

spent on low-value care

## Top 10 wasteful services

These 10 areas of low-value care account for over 90% of waste for commercially insured patients, ranked by number of low-value services delivered:

All services measured 1/1/14 –12/31/17



For more background, including Medicaid results, read the summary at [WHAreport.milliman.com](http://WHAreport.milliman.com)